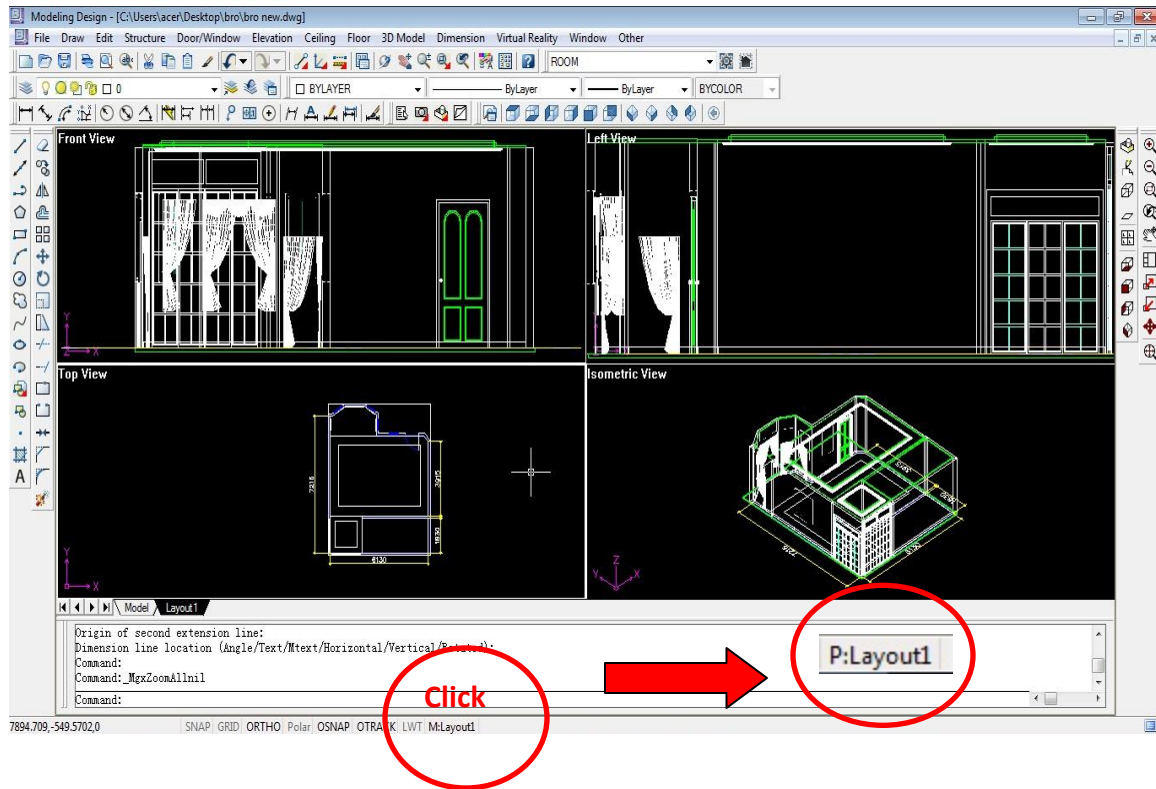
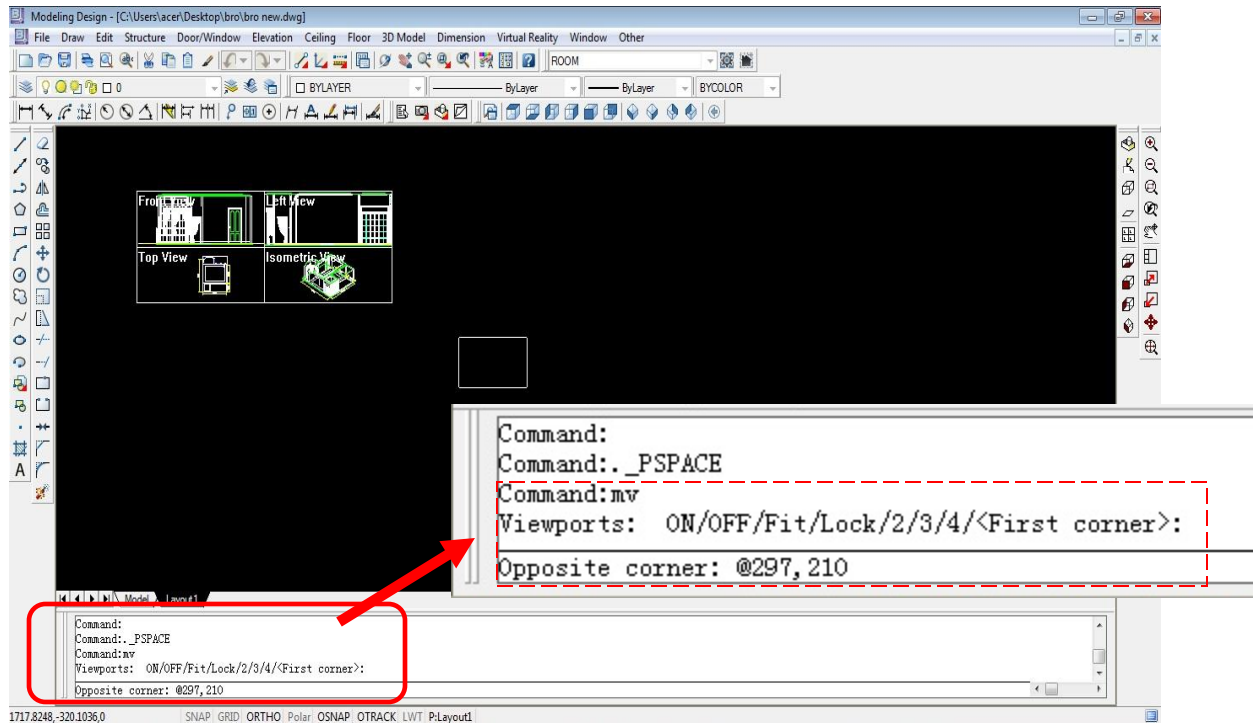


Please follow the steps below to print to scale using InteriCAD T6:

1. Click on **M:Layout1(Model)** at the bottom of viewport to switch to **P:Layout1(Paper)**;



2. Drag your drawing to the corner; Type "mv" at command bar and press ENTER.
3. Click a point at the blank area, then type **@297,210**(A4 paper size) and press ENTER.

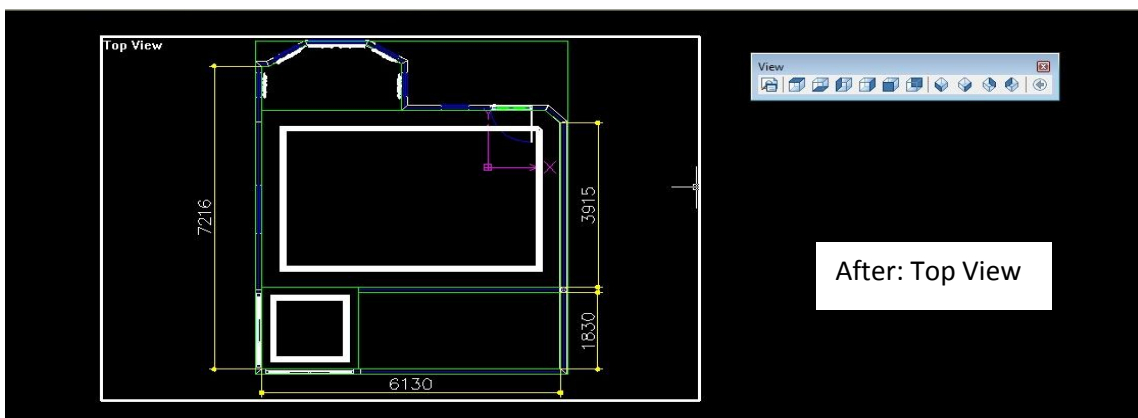
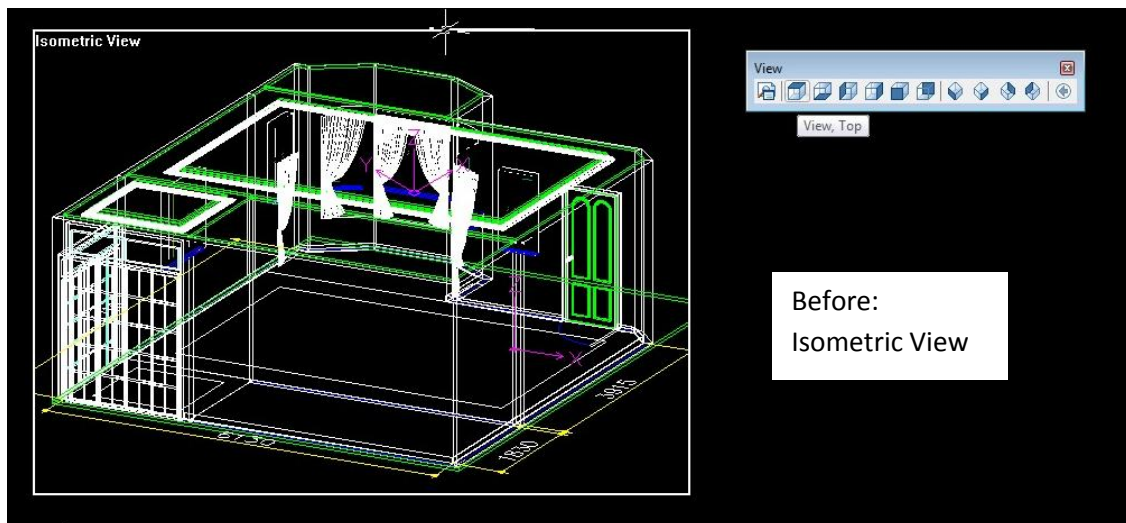


4. You will get a new A4 sized viewport as shown below:

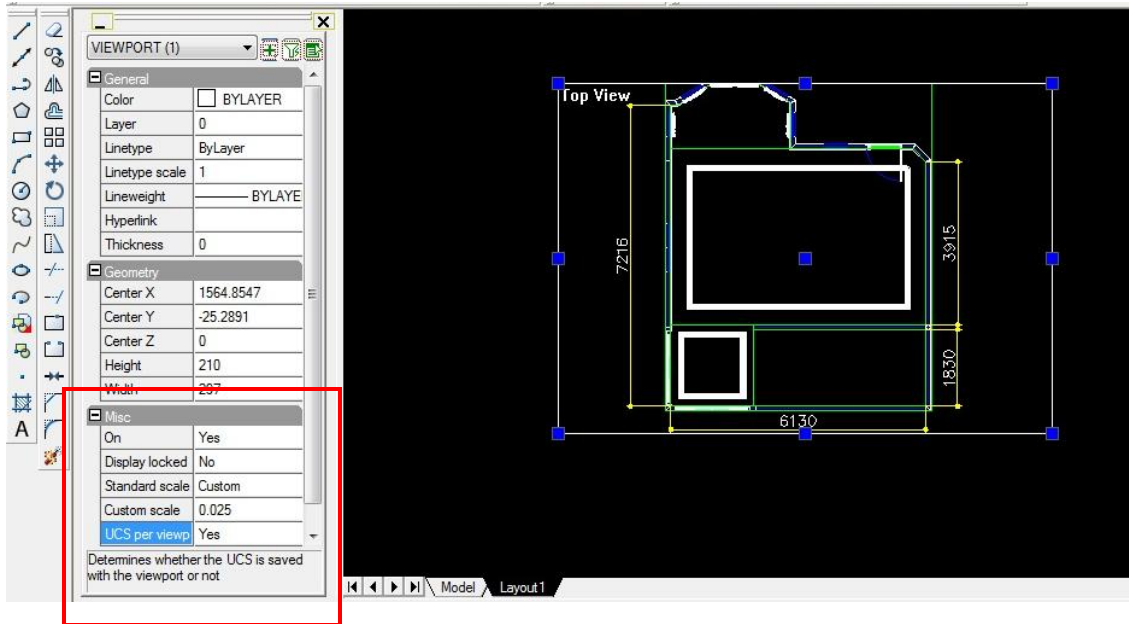


5. Click on the **P:layout1** now to switch back to **M:Layout1**;

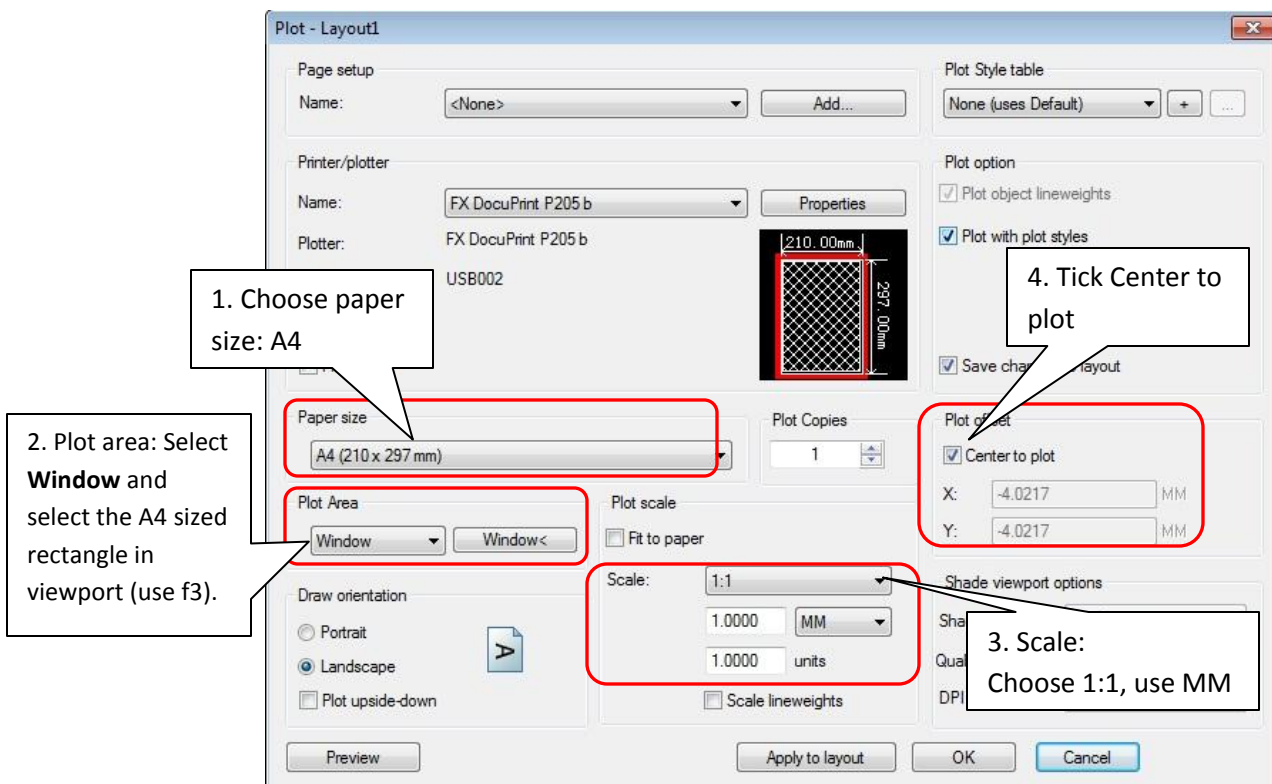
6. Switch the current view(isometric view) in the rectangle to **Top View**;



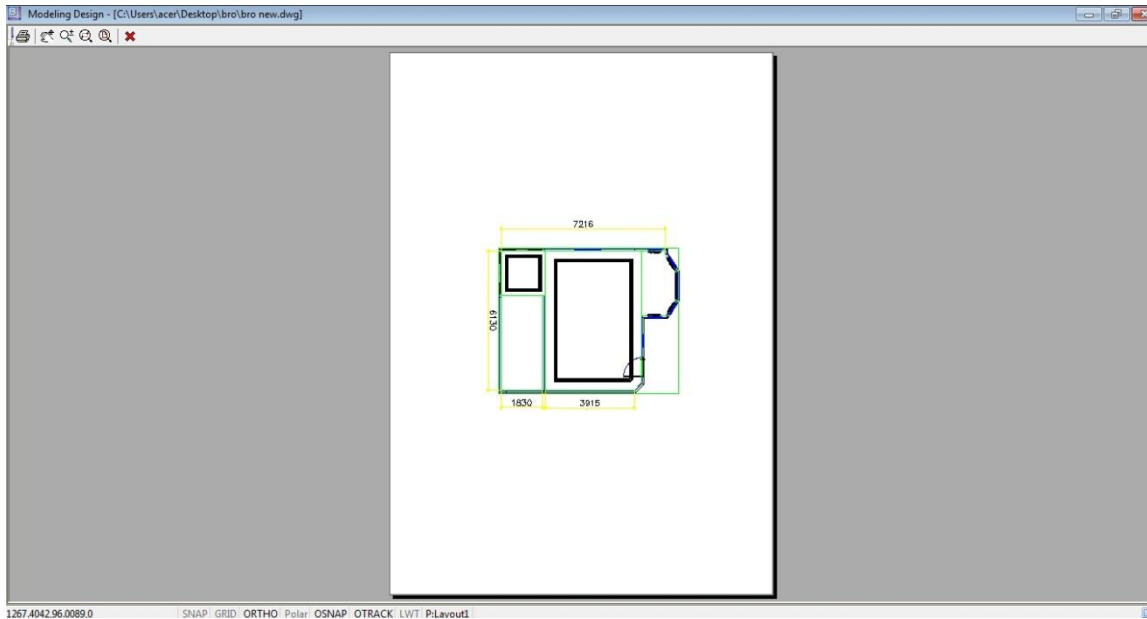
7. Click on the **M:layout1** now to switch back to **P:Layout1**
8. Left click at the rectangle, right click and select “**Properties**”;



9. At Misc. section: Type **0.025**(scale 1:40) in **Custom scale** and press ENTER; You may type other scale, e.g 0.02(1: 50), 0.0125(1:80), etc.
10. You may now print the drawing; Select **File/Plot**;
11. In the plot dialogue:



12. Click **Preview** to check the layout;



13. Finally, click Print an you're done.

Good Luck!