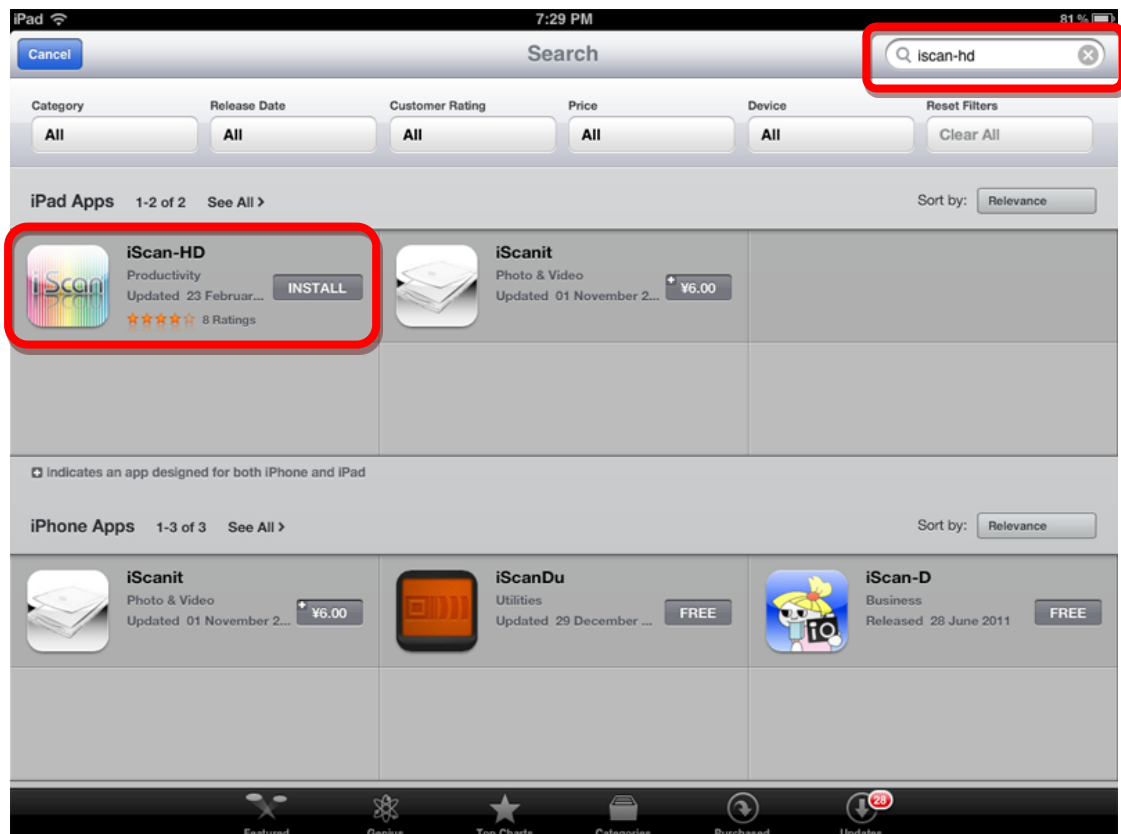


The instruction of iScan on iPad

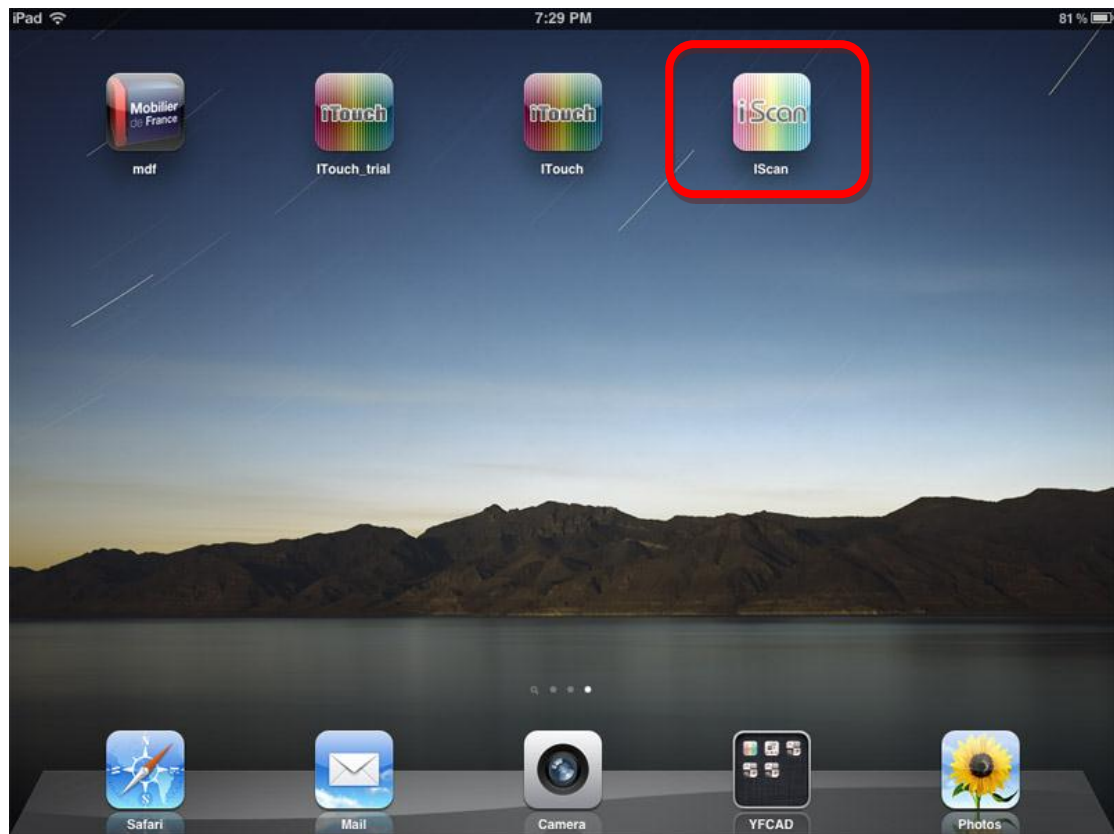
Step 1-Run App Store in your device



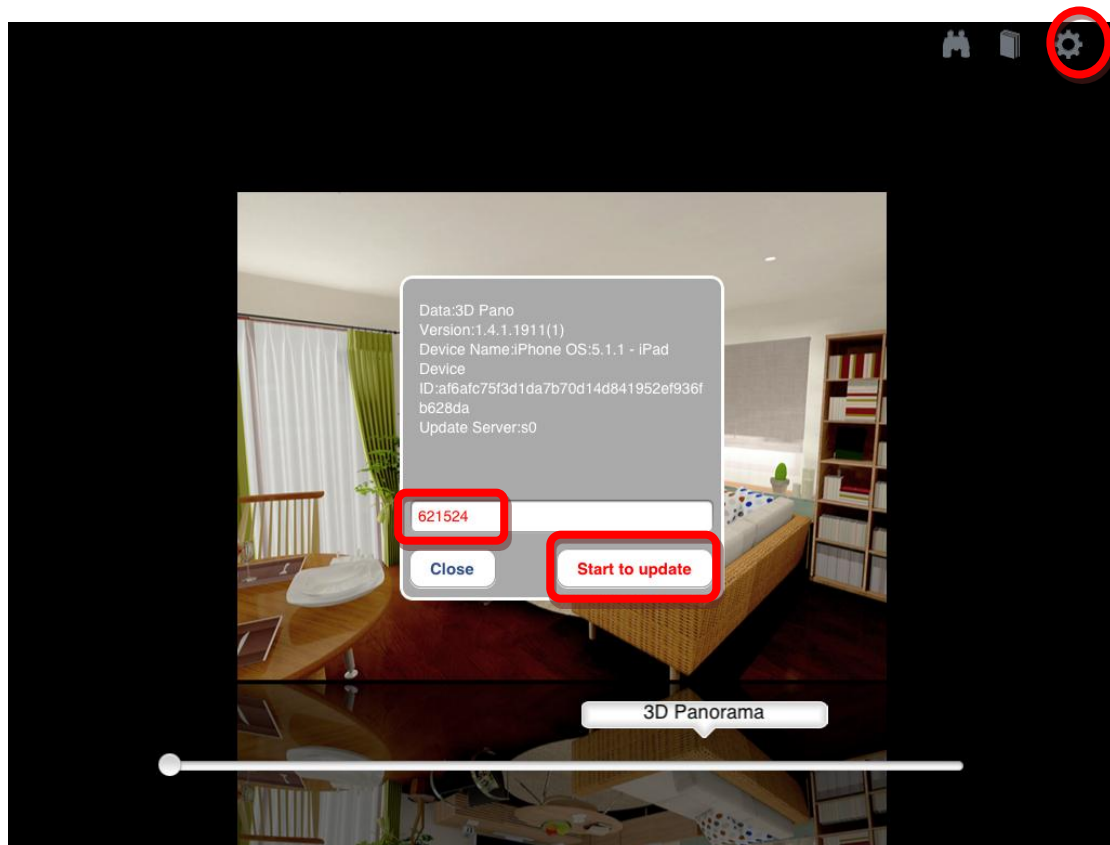
Step 2- Please search "iscan-hd" in the search column



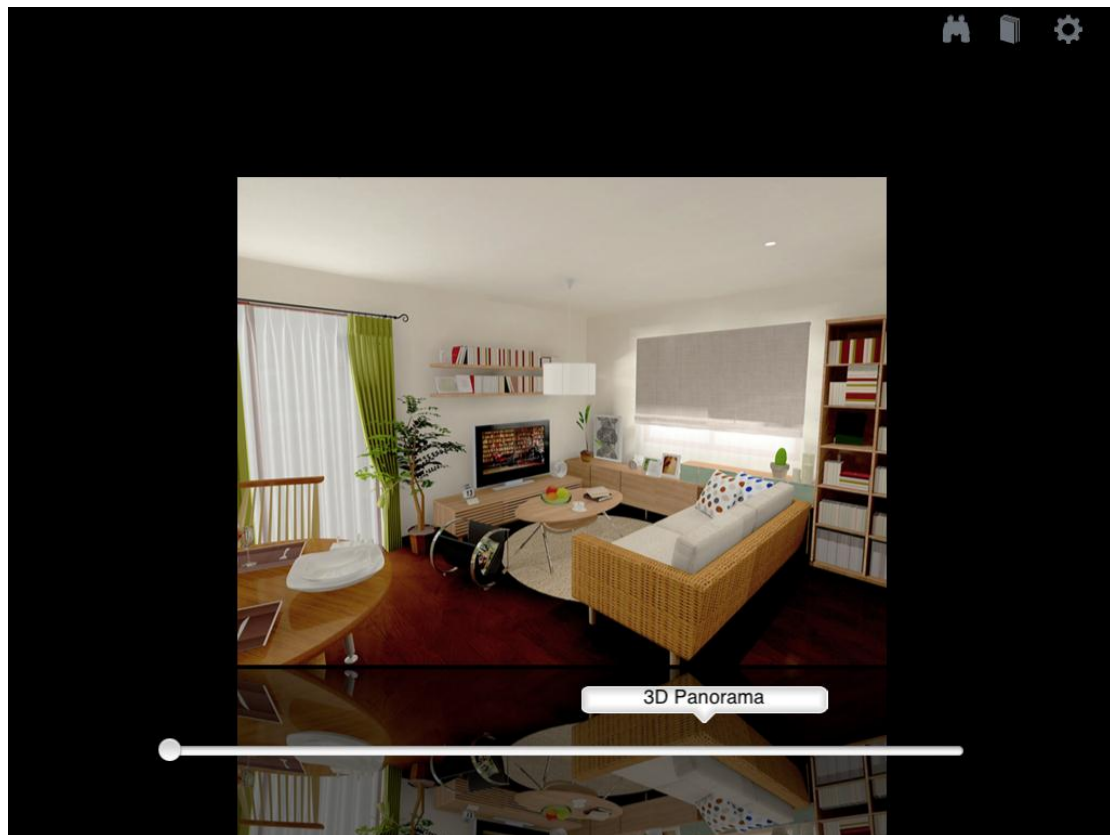
Step 3- Touch install and the iScan will be installed automatically in your device.



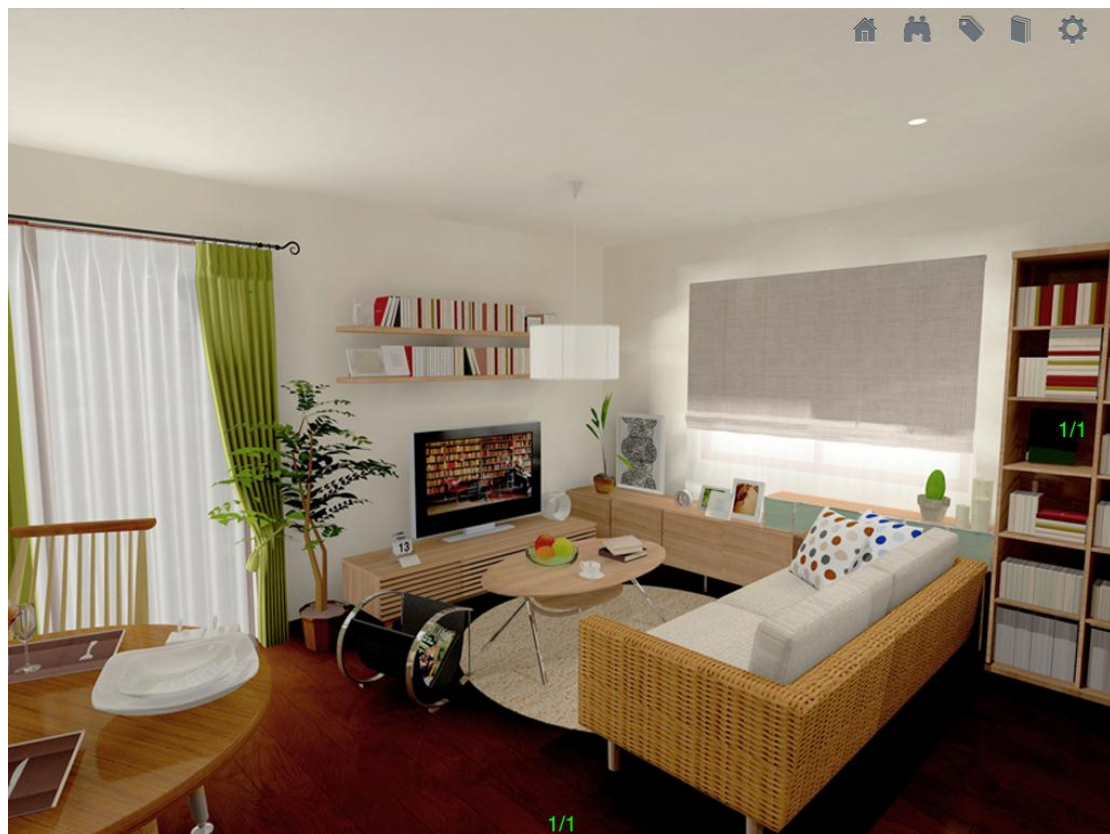
Step 4- Open the apps, click the icon on the right corner, input the code "621524" and click "Start to update".



Step 5- After finishing download the data package and unpack it, then you will see the products that we made for you.



Step 6: Click the picture to open the panorama as below:



Step 7: Above picture showed means you already run the panorama application, please tap the screen again and you can open the panorama picture.



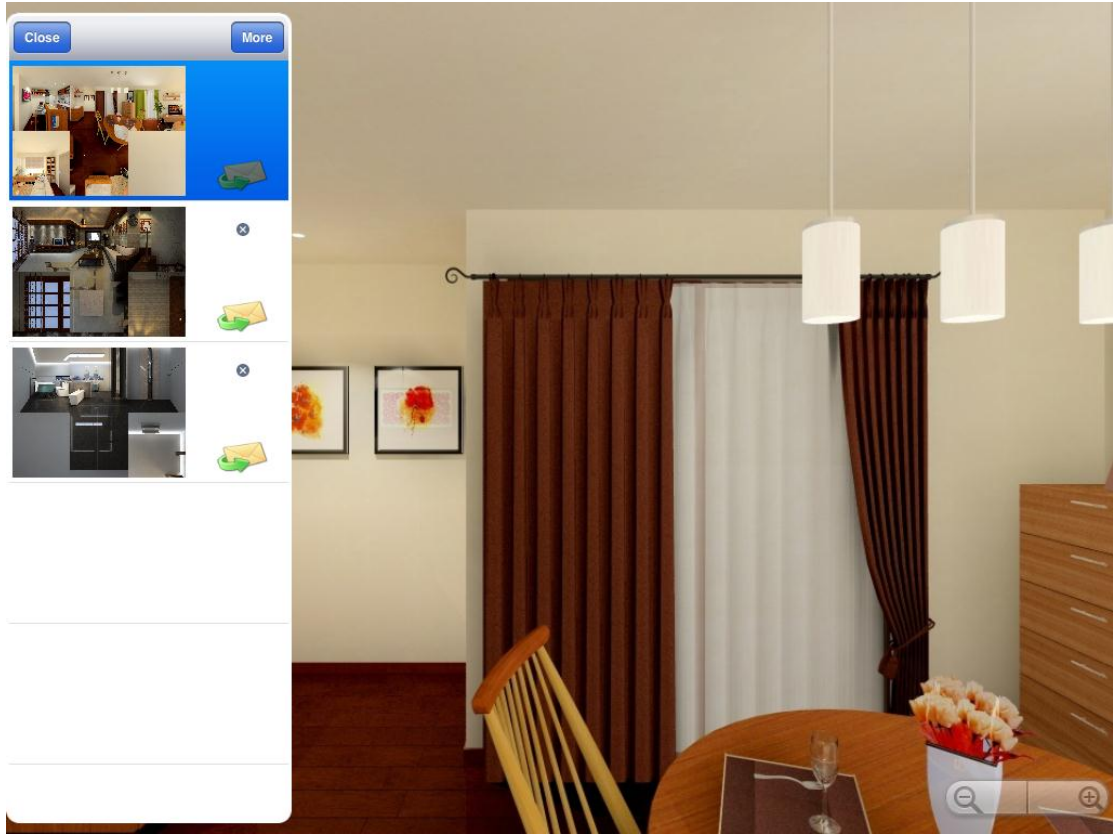
(Next page continues..)

How to add my own panorama?

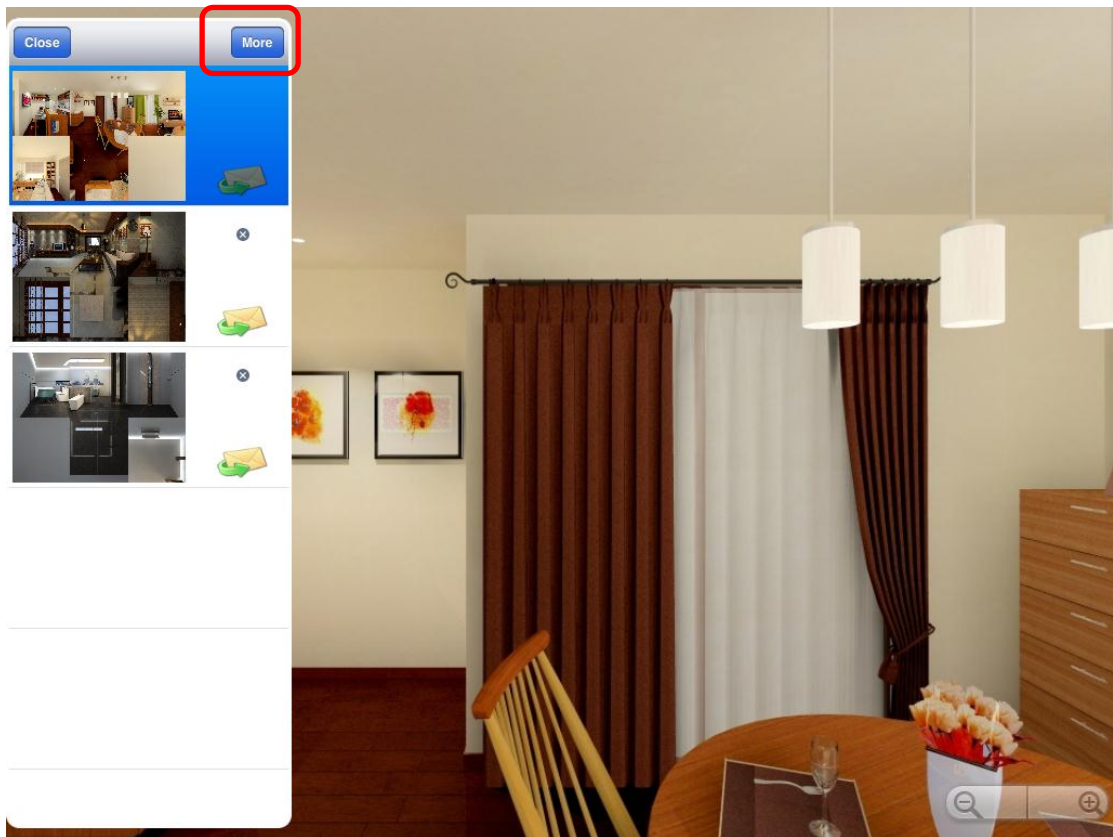
Step 1: Save panorama by InteriCAD on the PC end, the usage has to be 1024x768. Then, copy/move the panorama picture to your ipad/ipadmini

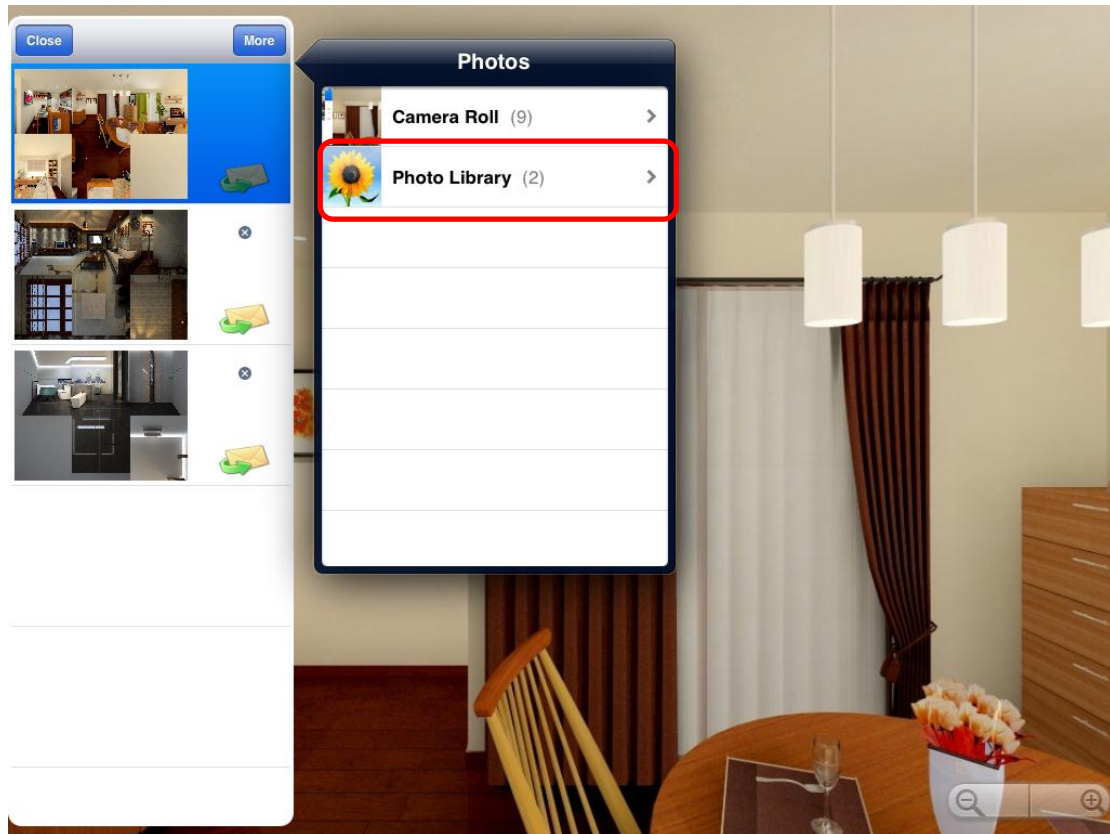
Step 2: Click the icon, then you can see the picture list.



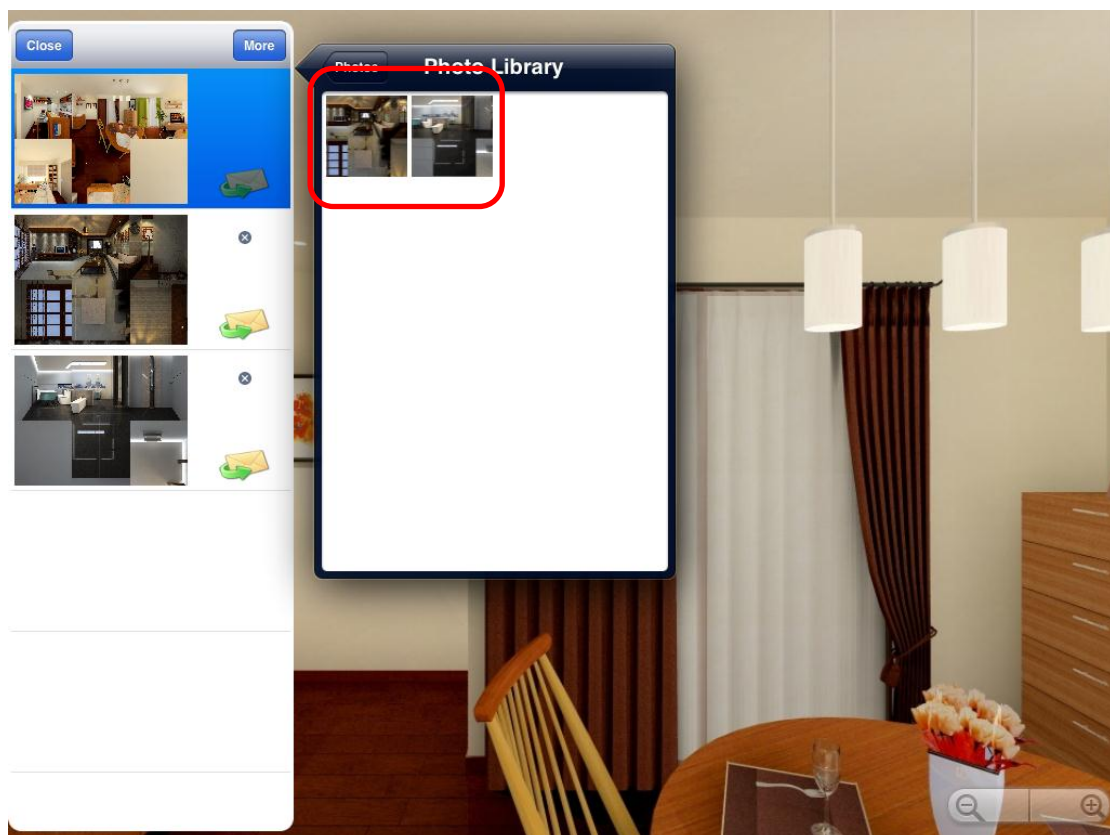


Step 3: Click “more” and find your own panorama picture.





Step 4: Choose the picture that you want to add on



Step 5: A few seconds, the picture will be listed at the left side. Just click to open.