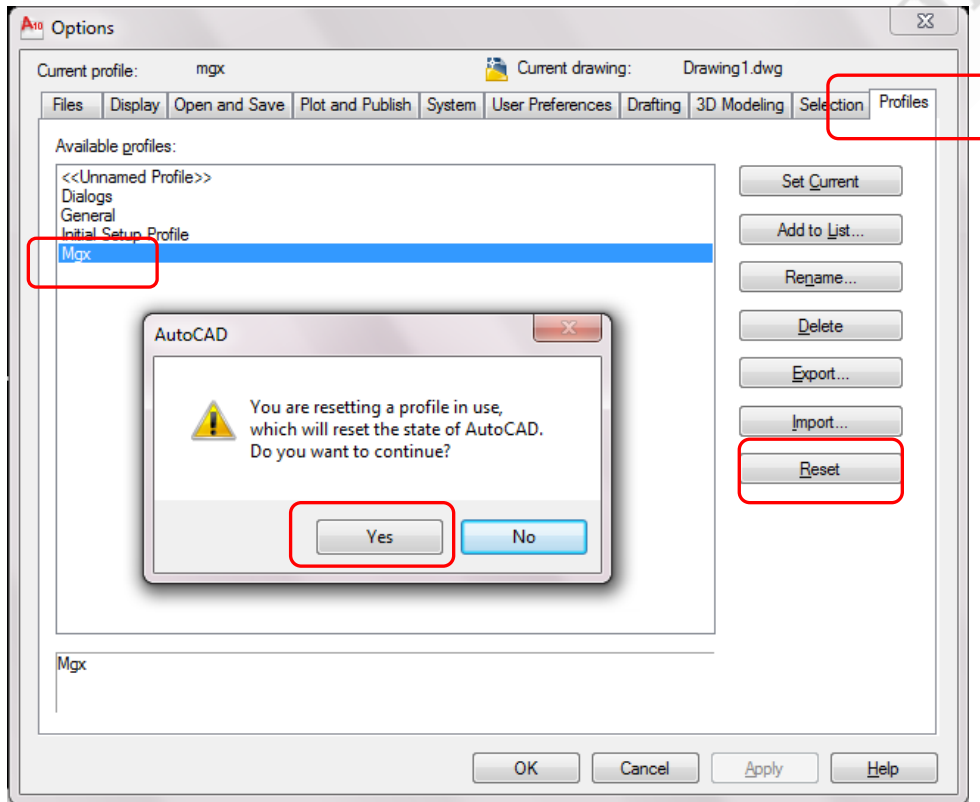


Reset Drawing Viewport (InteriCAD 7000)

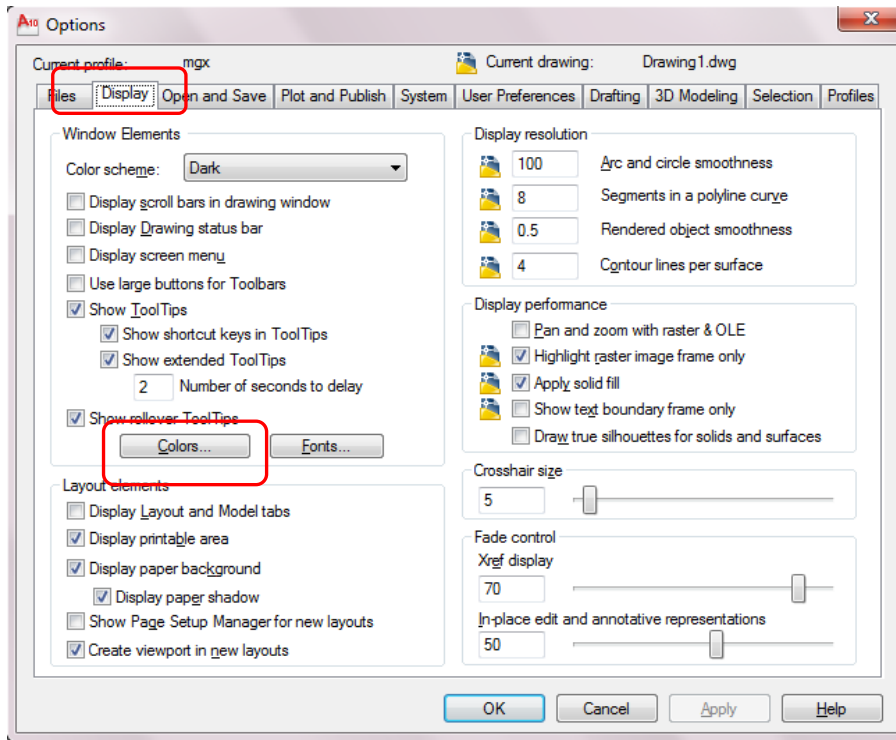
You may reset your profile by following the steps below:

- 1) Type "**op**" at the command bar and press ENTER.
- 2) Then, search for the "**Profiles**", click "**Mgx**" and click on **RESET**.
- 3) Click **Yes** on the pop up dialogue.

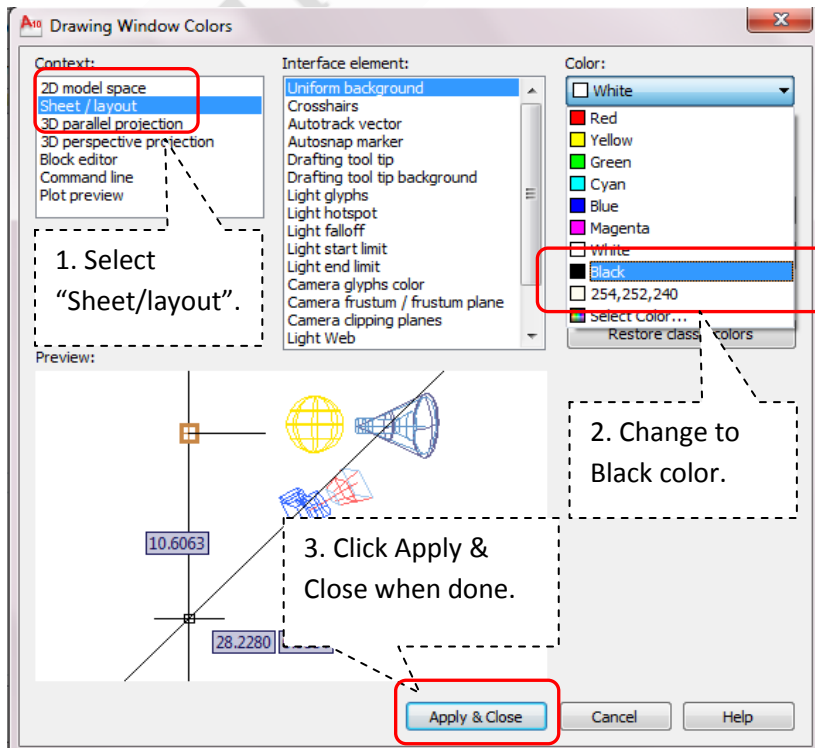


Display Setting

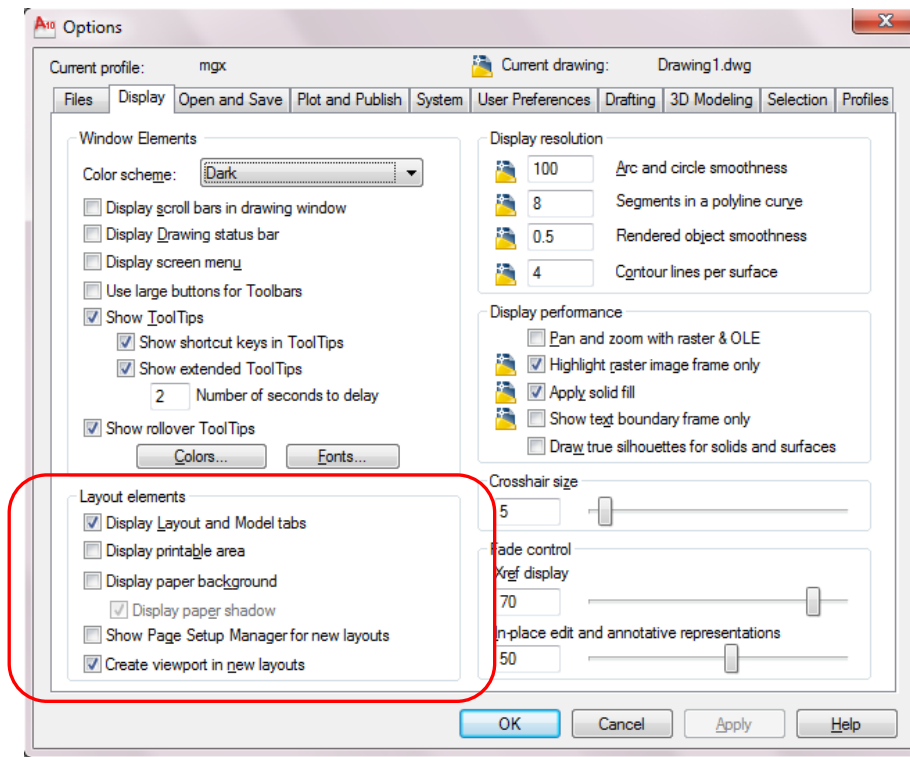
i) Switch to “**Display**” tab and click on the “**Colors**”.



ii) The system will pop-up this dialogue:

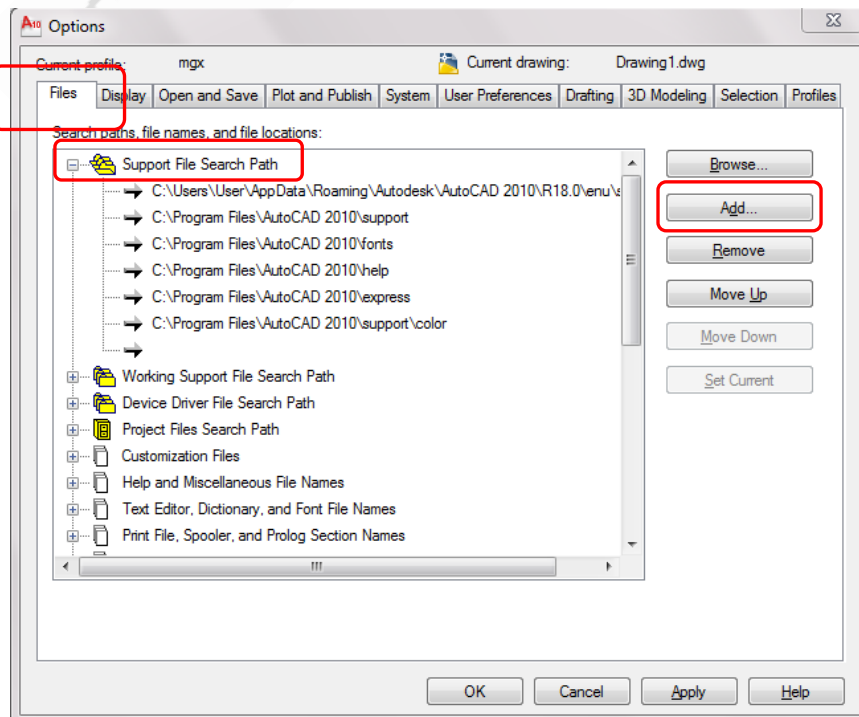


iii) Then on the layout elements: Check only the 1st & last box.

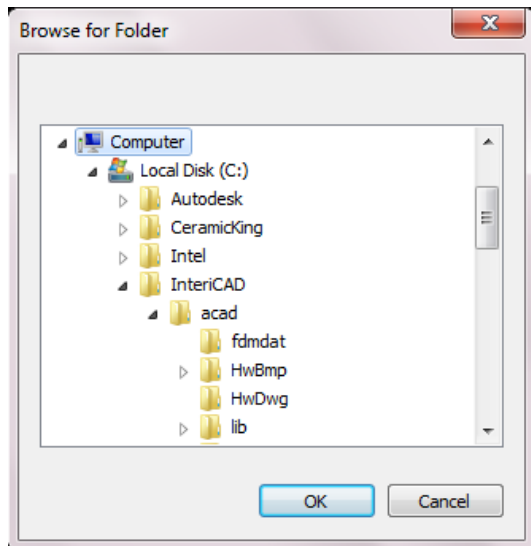


Files setting

i) Switch to "Files" tab and click on the "support file search path" and click "Add".



ii) Next, click on the **"Browse"** and the system pop-up this dialogue:

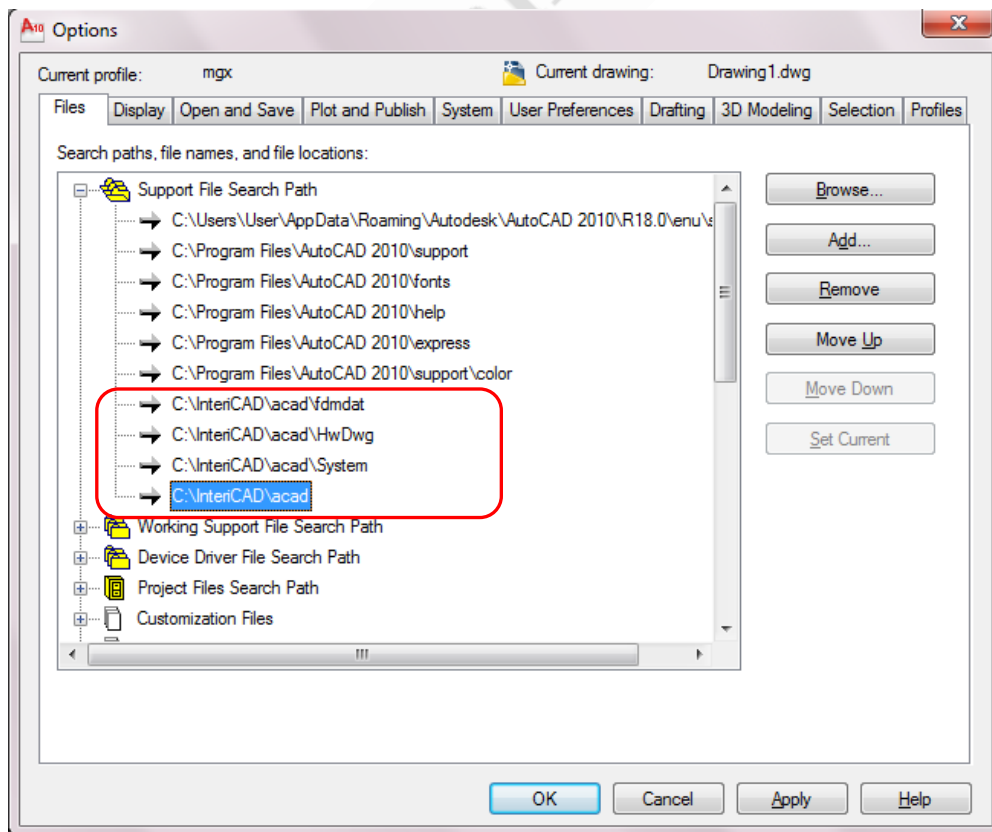


Browse for the following:

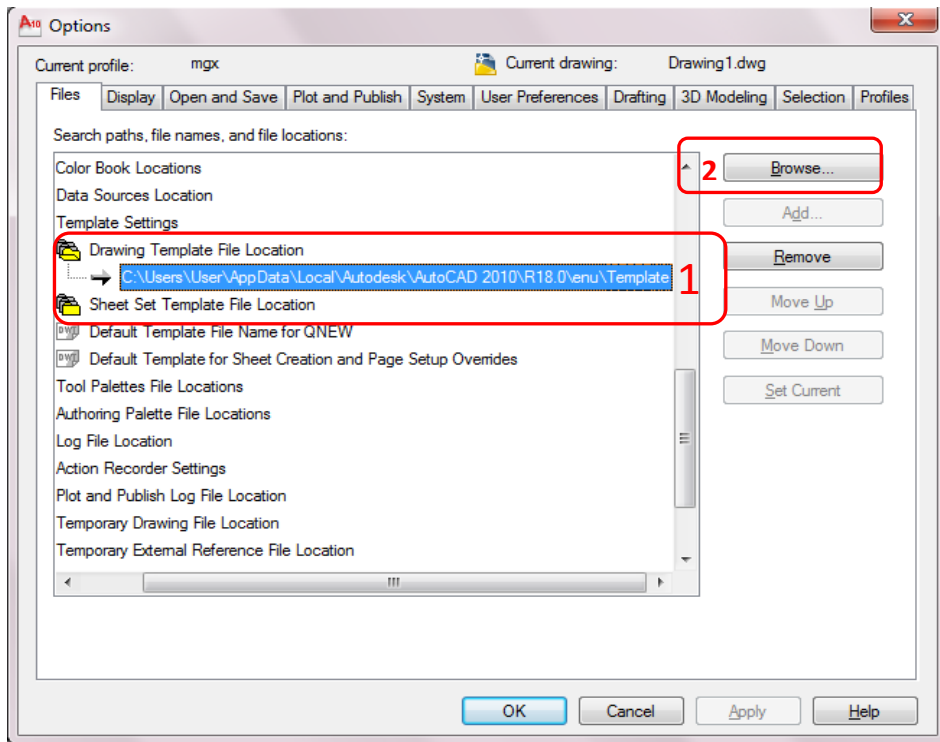
- a) C:/Intericad/acad/fdmdat
- b) C:/Intericad/acad/HwDwg
- c) C:/Intericad/acad/system
- d) C:/Intericad/acad

****Note: After adding each folder, click "Add" 1st, then only "Browse" for the next folder.**

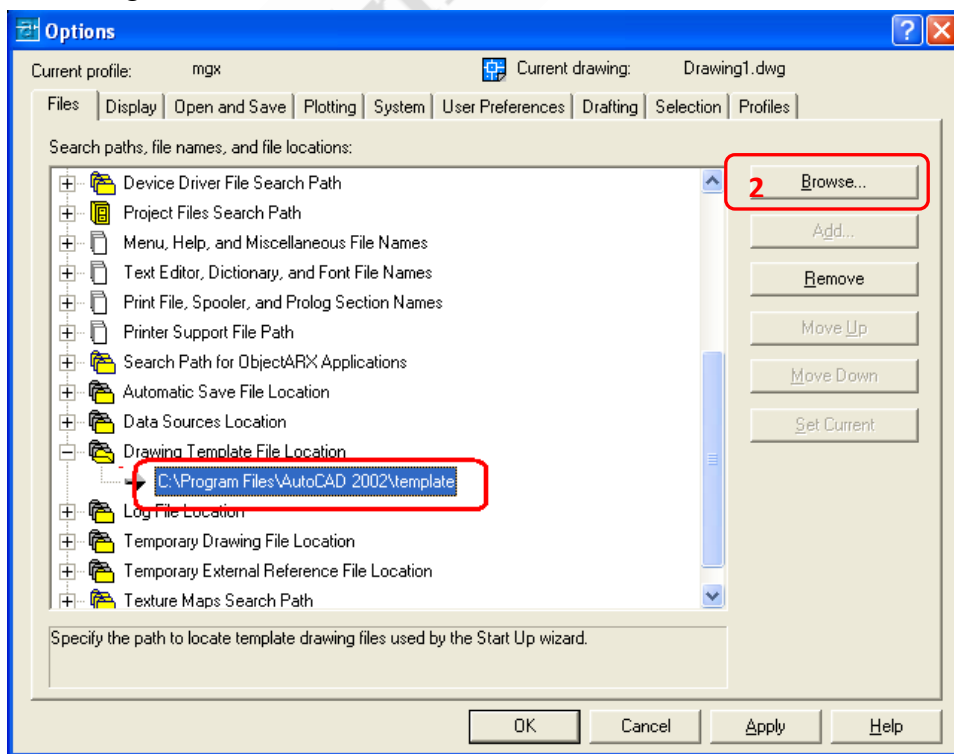
iii) Finally, you should see the entire newly added folders as shown below:



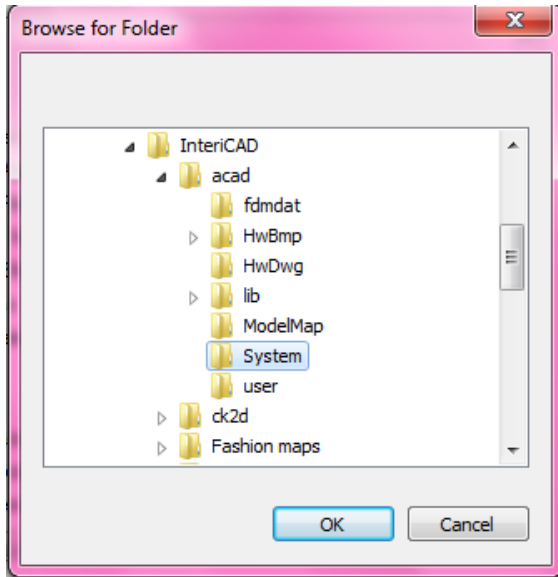
iv) Next, look for **"Template Settings"** and click on the link right below it. Then Click **"Browse"**.



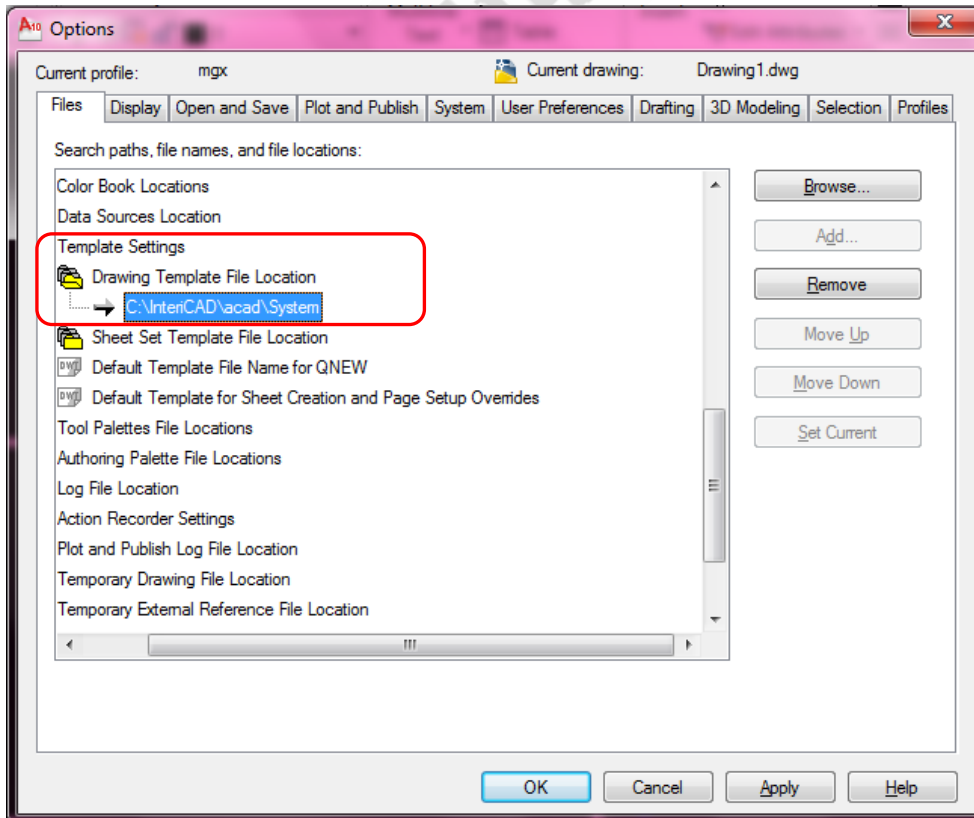
Note: For **AutoCad 2002-04 look for **"Drawing Template File Location"** and click on the link right below it. Then Click **"Browse"**.



v) Then browse for **C: InteriCAD/ acad/ system** and click OK.



vi) You should get the same display as shown below:



Vi) Finally, click OK to finish.

**Note: If the toolbars are in AutoCAD version, type "mgx" at the command bar and press ENTER to change back to InteriCAD.

Switch from Autocad to InteriCAD Interface

- At the command bar, type "**mgx**" and press Enter.